



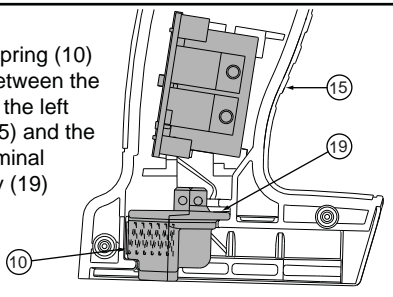
SERVICE PARTS LIST

BULLETIN NO.
54-24-2601

| | | | |
|--|---------|---|-------------------|
| SPECIFY CATALOG NO. AND SERIAL NO. WHEN ORDERING PARTS | | REVISED BULLETIN 54-24-2600 | DATE Nov. 2011 |
| M18 1/2" COMPACT HAMMER-DRILL | | | |
| CATALOG NO. | 2602-20 | STARTING SERIAL NO. | C15B |
| | | WIRING INSTRUCTION SEE PAGE 3 | |

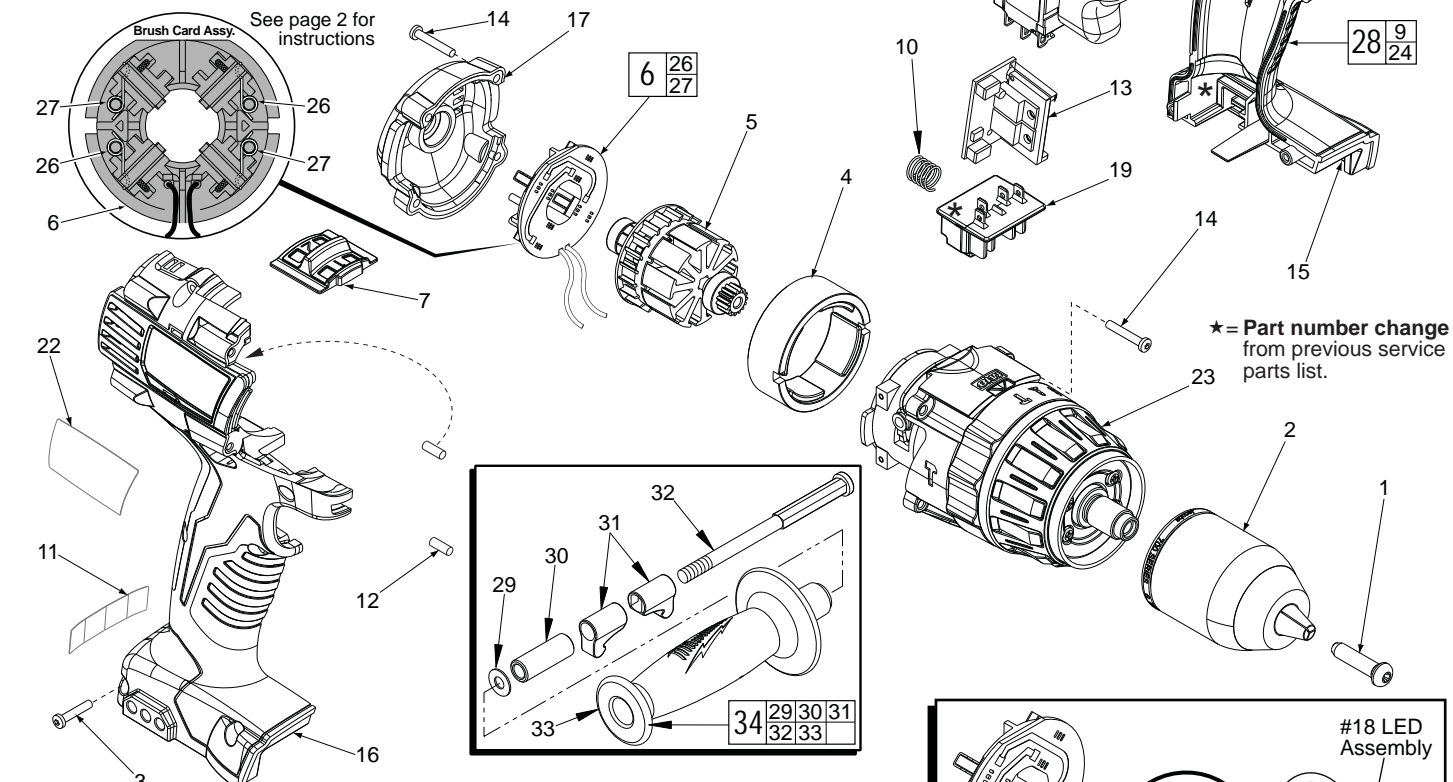
***NOTE:**

Compression spring (10) is positioned between the bottom/back of the left housing half (15) and the back of the terminal block assembly (19) as shown.



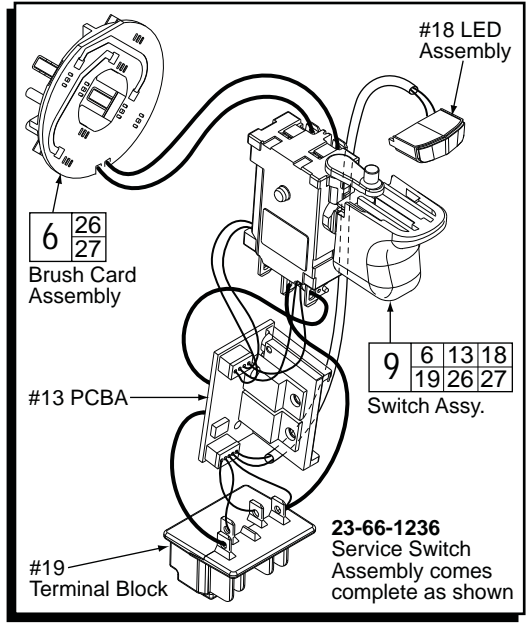
00 0

EXAMPLE:
Component Parts (Small #)
Are Included When Ordering
The Assembly (Large #).



* = Part number change from previous service parts list.

| FIG. | PART NO. | DESCRIPTION OF PART | NO. REQ. |
|------|------------|--|----------|
| ★ 1 | 05-88-1500 | M6 x 1.0 LH Chuck Screw w/ locking patch | (1) |
| ★ 2 | 42-66-0785 | 1/2" Keyless Chuck | (1) |
| 3 | 05-88-0770 | M3 x 16 Pan Hd. Plastite T-10 Screw | (7) |
| 4 | 18-01-3010 | Service Field | (1) |
| 5 | 16-01-3015 | Service Armature Assembly | (1) |
| 6 | 22-22-1640 | Brush Card | (1) |
| 7 | 45-24-0250 | High / Low Shifter | (1) |
| 8 | 42-42-0850 | Forward / Reverse Button | (1) |
| ★ 9 | 23-66-1236 | Service Switch Assembly | (1) |
| 10 | 40-50-1090 | Compression Spring | (1) |
| 11 | 10-20-2695 | Warning Label | (1) |
| 12 | 45-30-0270 | Rubber Slug | (4) |
| ★ 13 | ----- | PCBA | (1) |
| 14 | 05-88-0675 | M3.0 x 20mm End Cap/Gearcase Scr T-10 | (8) |
| ★ 15 | ----- | Left Handle | (1) |
| ★ 16 | ----- | Right Handle | (1) |
| 17 | 42-50-1060 | End Cap | (1) |
| ★ 18 | ----- | LED Assembly | (1) |
| ★ 19 | ----- | Terminal Block Assembly | (1) |
| 22 | 12-20-2602 | Service Nameplate Kit | (1) |
| 23 | 14-29-0375 | Service Gearcase Assembly | (1) |
| ★ 24 | 31-44-2635 | Service Housing Kit | (1) |
| 25 | 42-55-2602 | Carrying Case, Optional | (1) |
| 26 | 40-50-2170 | Brush Spring - Right Handed | (2) |
| 27 | 40-50-2175 | Brush Spring - Left Handed | (2) |
| ★ 28 | 23-66-1237 | Switch and Housing Kit | (1) |
| 29 | 45-88-2090 | Washer | (1) |
| 30 | 45-22-0800 | Sleeve | (1) |
| 31 | 42-68-0925 | Clamp | (2) |
| 32 | 45-04-0975 | Adjustment Screw | (1) |

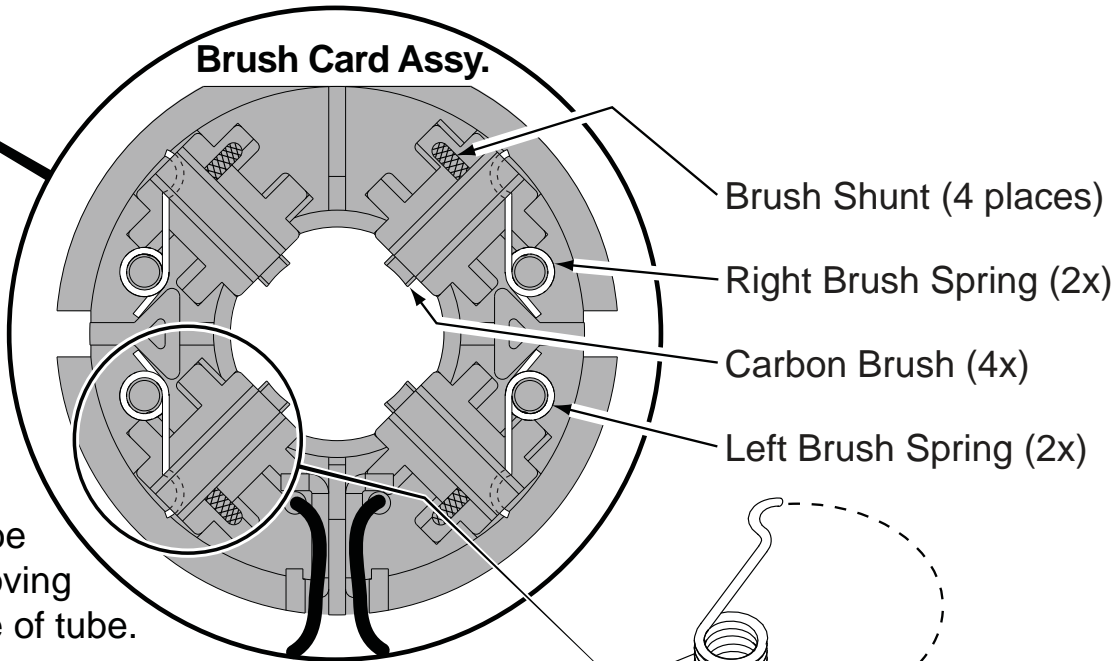
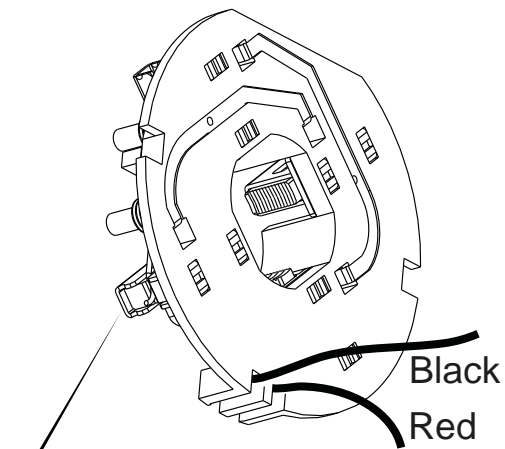


| FIG. | PART NO. | DESCRIPTION OF PART | NO. REQ. |
|------|------------|----------------------|----------|
| 33 | 43-62-1375 | Handle Grip | (1) |
| 34 | 42-62-0525 | Side Handle Assembly | (1) |

MILWAUKEE ELECTRIC TOOL CORPORATION
13135 W. Lisbon Road, Brookfield, WI 53005
Drwg. 2

INSTALLING BRUSH SPRINGS ON A BRUSH CARD ASSEMBLY WITH FOUR (4) BRUSHES

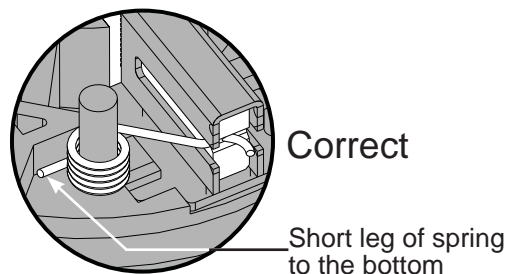
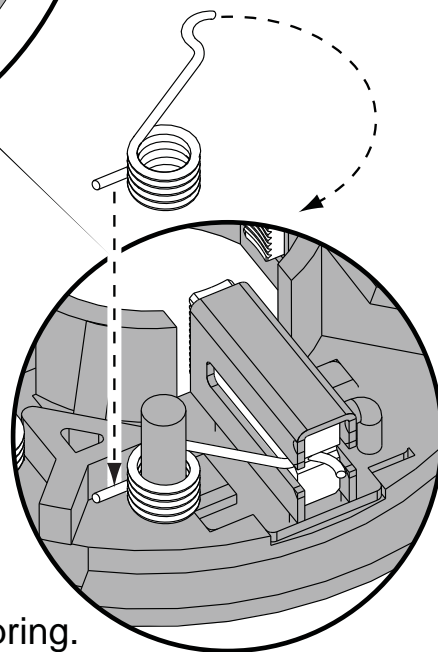
There are two 40-50-2170 RH Brush Springs and two 40-50-2175 LH Brush Springs. Follow the instructions below for proper installation.

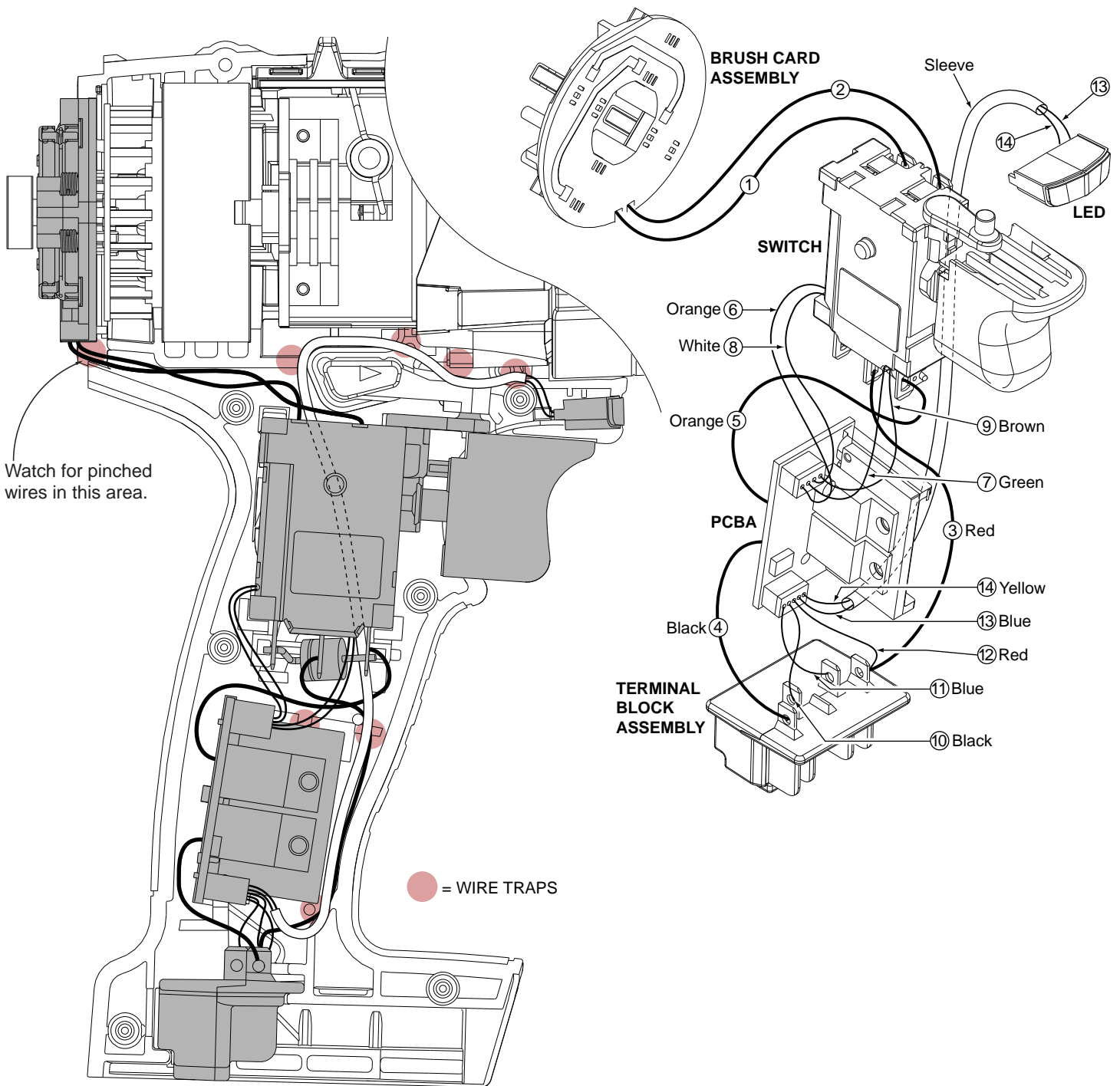


Be sure carbon brush is in brush tube with brush shunt moving freely in side groove of tube.

Place brush spring over post with short leg positioned downward as shown. Be sure spring is completely down with short leg trapped against 'Y' shaped wall on brush card.

While holding spring in place, bring the long leg of spring over the brush tube and through rear opening of tube. Position rounded hook of spring in groove on back of carbon brush. Be sure to check for free movement between carbon brush, brush shunt and brush spring.





WIRING SPECIFICATIONS

| Wire No. | Wire Color | Origin or Gauge | Length | Terminals, Connectors and 1 or 2 End Wire Preparation |
|----------|------------|-----------------|--------|---|
| 1 | Black | ---- | ---- | Component of Brush Card Assy. Connect to M2 on Switch. |
| 2 | Red | ---- | ---- | Component of Brush Card Assy. Connect to M1 on Switch. |
| 3 | Red | ---- | ---- | Component of Switch/Brush Card/Terminal Block Assembly. |
| 4 | Black | ---- | ---- | Component of Switch/Brush Card/Terminal Block Assembly. |
| 5 | Orange | ---- | ---- | Component of Switch/Brush Card/Terminal Block Assembly. |
| 6 | Orange | ---- | ---- | Component of Switch/Brush Card/Terminal Block Assembly. |
| 7 | Green | ---- | ---- | Component of Switch/Brush Card/Terminal Block Assembly. |
| 8 | White | ---- | ---- | Component of Switch/Brush Card/Terminal Block Assembly. |
| 9 | Brown | ---- | ---- | Component of Switch/Brush Card/Terminal Block Assembly. |
| 10 | Black | ---- | ---- | Component of Switch/Brush Card/Terminal Block Assembly. |
| 11 | Blue | ---- | ---- | Component of Switch/Brush Card/Terminal Block Assembly. |
| 12 | Red | ---- | ---- | Component of Switch/Brush Card/Terminal Block Assembly. |
| 13 | Blue | ---- | ---- | Component of Switch/Brush Card/Terminal Block Assy. (LED) |
| 14 | Yellow | ---- | ---- | Component of Switch/Brush Card/Terminal Block Assy. (LED) |